

Showcase Awards Gala

Friday, March 17, 2023



Consulting Engineers of Alberta Acknowledges and Thanks the
Showcase Awards Gala Sponsors 2023

Presenting Sponsor



McElhanney

Fostering Sponsors

AECOM



THURBER ENGINEERING LTD.



Table of Contents

04	Gala Dinner Menu
05	Gala Evening Program
06	The Lieutenant Governor's Award for Distinguished Achievement Recipient
08	Harold L. Morrison Rising Young Professional Award
09	Notice to All Submitting Firms
02	Showcase Awards Gala Sponsors 2023
30	
10	Showcase Awards Judges
11	Showcase Awards Submissions by Category

Menu

Seasonal Local Tomato Trio: green tomato gelée,
blistered beefsteak and candied teardrop tomatoes
with microgreens and an Alberta rosehip drizzle (GF, DF, V, VE)

18-Hour Braised Alberta “Boneless” Short Rib
Served with horseradish and maple potatoes,
cinnamon-infused carrot purée, seasonal vegetables,
Charred vadouvan cauliflower and a classic beef demi-glace (GF, DF)

Waterford Oyster & Lions Mane Mushroom Gnocchi
with sylvan star gouda and cream Sous vide carrot, sweet potato and
cauliflower purée, tomato nage (VE, V)

Trio of dark, milk and white chocolate pâté
with seasonal berries and a lavender coulis (VE, V)

Warm Breads buns from Good Bakery Creamery butter
Roasted Arabica coffee and teas

(V) Vegan
(VE) Vegetarian
(GF) Gluten Free
(DF) Dairy Free

Program

6:30 pm

Welcome by **Jason Maurer**, CEA Vice President

Master of Ceremonies – **Ryan Jespersen**

Address by **Ryan Betker**, CEA President

Greetings from:

- Province of Alberta - **Honourable Danielle Smith**, Premier
- City of Calgary - **Councillor Evan Spencer**
- Association of Consulting Engineering Companies-Canada - **Tim Stanley**, Chair
- Presenting Sponsor – **Dr. Robert Radovanovic**, McElhanney Ltd.
Vice President - Prairies South and St. John's

Dinner

Award Presentations:

- The Lieutenant Governor's Award for Distinguished Achievement
Presented by: **Her Honour, the Honourable Salma Lakhani, AOE, B.Sc., LLD (hon)**
- Harold L. Morrison Rising Young Professional Award
- Showcase Awards

Lieutenant Governor's Award for Distinguished Service

The Project Whisperer

Brian Pearse says engineering is a lot like riding horses: with patience and good communication, you can do great things

Growing up in Sturgeon County, north of Edmonton, Brian Pearse's life revolved around riding and showing the horses on his family's farmland. It wasn't until high school that he started thinking about a career plan. "I thought I would probably be an electrician, like my dad," he says. "This notion of engineering — I really didn't know any people with that type of background to talk to, but it was intriguing," he says. So he did a little research and talked to the school counselor. He was starting from scratch — he had not even taken physics at that point — but engineering "became a goal without really knowing a whole lot of what it entailed."

He took engineering at the University of Alberta, but upon graduating still did not have much non-horse-based, real-world experience. So he started with Stewart Weir and Company, a surveying and engineering company established in Alberta in 1912, and he received all the experience he could want. The company was small at the time, and Pearse was immediately put on a highway project survey crew, where he started learning about... pretty much everything. "I literally went out and surveyed the project, came in, processed the data, did the design, put the contract together, tendered it, and was basically the project manager," he says. "Having the ability to be involved in every single step was unique."

He turned that experience into a 30-year career, almost all of which was spent at Stewart Weir, where he eventually

became CEO. He says his life has had many "aha" moments, but that his career has been "more of a build than a boom." He credits mentors like former assistant deputy minister of Alberta Transportation Nester Chorney and the late Reg Kotch, who worked with Alberta Transportation and was the mayor of the Town of Stony Plain. They taught him to have an appreciation of the entire job, from the work in the field to the importance of invoicing. By the time he became Stewart Weir's manager of transportation, Pearse "felt ready for anything."

If it sounds like Pearse enjoys the business side of things as much as the actual engineering, that's because he does. "I love being an engineer, but I was really driven by the business aspect. I enjoyed the partnership with the client and the contractor to deliver. And I always felt like we could be more efficient, take on bigger projects and bring more services to clients."

After a long career and term as president of the Association of Professional Engineers and Geoscientists of Alberta, Pearse now frequently works with First Nations. He says he appreciates their patience and intention when it comes to new projects. "If we have a meeting, it's not unusual that they start the meeting with a prayer. They're looking for different projects and they discuss them very deeply. Success to them is probably a little bit different than how traditional companies see it. And that has to be recognized."

Pearse stepped away from the world of horses while he and his wife — whom he met while taking riding lessons — raised their kids, but he says the equestrian and engineering worlds aren't so far apart. "The thing with horses is it's not as simple as just going: This is the goal, this is what we're gonna do. They don't typically respond well to that," he says. Similarly, clients — or staff, or the projects themselves — don't always respond well to that thinking. There are always things that get in the way of advancing a project, things that are beyond your control. But if you have patience, and communicate well, you can reach that goal."



Harold L. Morrison Rising Young Professional Award



John MacKenzie, P.Eng.
Project Manager and Lead Engineer
AECOM



Kirk Haugrud, M.Eng., P.Eng.
Senior Engineer
Entuitive Corporation



Sarah Faithful, E.I.T.
Designer, Bridges
WSP



Vincent Huang, P.Eng.
Geotechnical Engineer
WSP E&I

Thank You to Our Judges

Al Maurer, P. Eng., Retired Edmonton City Manager

Herb Kuehne, P. Eng., CEA Past President

Ken Pilip, P.Eng., CEA Past President, CEA's Past CEO & Registrar

Notice to All Submitting Firms

Category Order:

- Environmental
- Transportation Infrastructure
 - Transportation Structures
- Building Engineering
 - Institutional
- Water Resources
- Community Outreach and In-House Initiatives
- Transportation Infrastructure
 - Roads, Interchanges, Airports, Mass Transit
- Studies, Software and Special Services
- Building Engineering
 - Commercial
- Project Management
- Small Firm - Big Impact
- Community Development
- Sustainable Design

Announcement of Showcase Award Winners

The Showcase Awards is an 'Oscar Style' awards show. In each category nominees will be announced and the winner(s) declared: Merit and Excellence. If your project is announced as a winner please make your way to the stage. NOTE the entire team, consultants, clients, subs, contractors, are encouraged to come up to the stage together to be recognized.

Showcase Award Winners' Gala Photo

Each award winning team will be directed from the stage to the photography area for their official award photo. After the photo, please make your way back to your seats as quickly as possible, especially if your project is in multiple categories.

Showcase Awards - Annual Print

Each award winning project receives an official 2023 Showcase Award print for the winning firm(s) and client(s).

Each winning firm is asked to come to the Award Print Desk at the end of the evening and sign for the award prints. The Award Print Desk is located in the Quarter Horse A room down the hall past the coat check. Please note it is the winning firm's responsibility to ensure the client receives the print.

To order additional award prints, please contact Inderjeet Singh at isingh@cea.ca, or go to the CEA Showcase Awards Gala web page to download the order form: www.cea.ca



Judges

Adam Laughlin, P.Eng.

Andrew Sharman, M.Sc., CMILT

Bill Rosehart, P.Eng, PhD.

Bruce Cullen, B.Sc.

Douglas Wright, CD, LCol (Retd), FMA

Erin Bird, P.Eng.

George Jergeas, P.Eng., PhD., M.Sc., B.Sc.

Lisa White, PhD., P.Eng., FEC

Lisa Doig, P.Eng.

Malcolm Bruce, MSM, ICD.D

Michael Thompson, P.Eng., MBA

Mike Koziol, P.Eng., M.Eng.

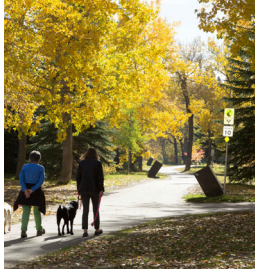
Mike Damberger, P.Eng.

Paul Breeze, FACI, FCPCI

Tom Loo, P.Eng.

Showcase Awards Submissions by Category - Project Summary

Environmental



Determining the Value of Natural Assets

Firm: **Associated Engineering**
Client: City of Calgary
Location: Calgary, Alberta
Sub Consultant: Green Analytics Corp.



Modern Integrated Waste Management Facility

Firm: **Tetra Tech Canada Inc**
Client: City of Lethbridge
Location: Lethbridge County, Alberta
Sub Consultants: ReLumen Engineering Inc.; Kumlin Sullivan Architectural Studio Ltd.; Sunwise Engineering Ltd.; Feeg Engineering Ltd.; BCB Engineering Ltd.
Contractors: Whissel Contracting Ltd.; McNally Contractors (2011) Ltd.; GoldRidge Sand and Gravel; Secure Energy Services Inc.; Southwest Design & Construction Ltd.; Engineered Compost Systems; John Zink Hamworthy; DMT Mechanical Ltd.



State-of-the-Art Shredder and Recycling Facility

Firm: **Arrow Engineering Inc.**
Client: General Recycling Industries Ltd.
Location: Edmonton, Alberta
Other Key Players: Glen Tichkowsky; Kevin Mattai





9th Avenue Bridge Replacement

Firm: **WSP**

Client: City of Calgary

Location: Calgary, Alberta

Sub Consultants: COWI North America Ltd.; Tetra Tech Canada Inc.; Maskell Plenzik & Partners Eng Inc.; Sturgess Architecture; W Architecture & Landscape Architecture LLC; Donald Luxton & Associates Inc.

Contractors: PCL Construction Management Inc.; Supreme Steel; Lafarge Canada Inc.; Bauer Foundations Canada Inc.; Ironclad Earthworks Ltd.



Bridge 4 Replacement on Hwy 10x - A New Truss Bridge in a Historic Corridor

Firm: **LEX3 Engineering Inc.**

Client: Transportation and Economic Corridors

Location: Drumheller, Alberta

Sub Consultants: Roads West Engineering Ltd.; Pisces Environmental Consulting Services Ltd.; Ghostpine Environmental Services Ltd.; Thurber Engineering Ltd.; Terrace Engineering Ltd.; Rockliff Pierzchajlo Kroman Architects Ltd.

Contractor: Alberco Construction Ltd.



Duggan Bridge Replacement

Firm: **Associated Engineering**

Client: City of Edmonton

Location: Edmonton, Alberta

Sub Consultants: Thurber Engineering Ltd.; Circle CRM Group; Kinnikinnick Studio

Contractor: PCL Construction





Jaipur Pedestrian Bridge

Firm: **Parsons Inc.**
Client: City of Calgary
Location: Calgary, Alberta
Sub Consultants: Formed Alliance Architecture Studio; Mulvey & Banani International Inc.; Matrix Solutions Inc.; Thurber Engineering Ltd.; Lifeways of Canada Ltd.
Contractor: Graham Construction



McKnight Boulevard Pedestrian Bridge Rehabilitation

Firm: **RJC Engineers**
Client: City of Calgary
Location: Calgary, Alberta
Sub Consultant: Urban Systems Ltd.
Contractor: Graham Management Services LP



Mill Woods Transit Centre

Firm: **DIALOG**
Client: City of Edmonton
Location: Edmonton, Alberta



Transportation Infrastructure - Transportation Structures Continued



Peace River Shop Slide/Hwy 2 Off Ramp Tied-Back Concrete Wall Pile

Firm: **Thurber Engineering Ltd.**
Client: Transportation and Economic Corridors
Location: Peace River, Alberta
Sub Consultant: DIALOG Design
Contractor: Kichton Contracting Ltd.
Other Key Player: Transportation and Economic Corridors



Building Engineering - Institutional



Grande Prairie Regional Hospital

Firm: **DIALOG**
Client: Alberta Health Services
Location: Grande Prairie, Alberta



Innovation Crossing

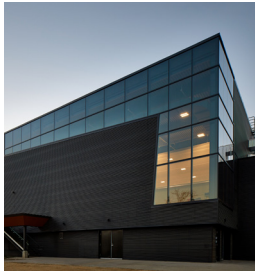
Firm: **RJC Engineers**
Client: Heritage Park Historical Village
Location: Calgary, Alberta
Sub Consultants: Remedy Engineering; SMP Engineering; Urban Systems Ltd.
Contractor: Akela Construction Ltd.
Other Key Player: Ace Architecture





Medicine Hat College Health, Wellness and Athletics Expansion

Firm: **RJC Engineers**
Client: Medicine Hat College
Location: Medicine Hat, Alberta
Sub Consultants: Sunwise Engineering Ltd.; SMP Engineering; MPE Engineering Ltd.
Contractor: Chandos Construction
Other Key Player: FWBA Architects



Royal Glenora Club Redevelopment

Firm: **Entuitive Corporation**
Client: Royal Glenora Club
Location: Edmonton, Alberta
Sub Consultants: Entuitive Corporation; WSP; Burnstad Consulting; Arc Studio; Smith + Andersen; ECCOM Consulting Inc.; AI-Terra Engineering Ltd.; ISL Engineering and Land Services Ltd.
Contractor: Carlson Construction

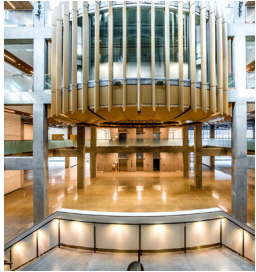


TELUS World of Science Edmonton - Aurora Expansion

Firm: **DIALOG**
Client: TELUS World of Science Edmonton
Location: Edmonton, Alberta
Sub Consultant: WSP
Contractor: Delnor Construction Ltd.



Building Engineering - Institutional Continued

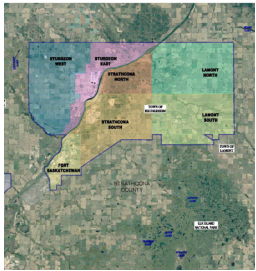


University of Alberta, University Commons

Firm:	SMP Engineering
Client:	University of Alberta
Location:	Edmonton, Alberta
Sub Consultants:	SMP Engineering; RJC Engineers; AME Group
Contractor:	Clark Builders
Other Key Players:	GEC Architecture; ERA Architects; Territorial Electrical, Priority Mechanical



Water Resources



Designated Industrial Zone (DIZ) Pilot Project - Regional Water Systems Feasibility Study

Firm:	Stantec Consulting Ltd.
Client:	Alberta Environment & Parks
Location:	Edmonton, Alberta



Drainage Solutions for Sunnyhill Lane Residents

Firm:	GHD Limited
Client:	City of Calgary
Location:	Calgary, Alberta
Contractor:	LBCO Contracting Ltd.





Shaganappi Pump Station Replacement

Firm: **Associated Engineering**
Client: City of Calgary
Location: Calgary, Alberta
Sub Consultants: Riddell Kurczaba Architecture Engineering Interior Design Ltd.;
Thurber Engineering Ltd.; Russell PR Inc.; Calvin Consulting Group Ltd.;
FDI Acoustics Inc.
Contractors: Graham Infrastructure LP; Whissell Contracting Ltd.; Balzers Canada Inc.;
The Vector Group; Motion Steel Ltd.; Flynn Group of Companies; Eagle Builders LP



Trestle No. 3 - Rehabilitation and Steel Pipe Replacement

Firm: **Associated Engineering**
Client: EPCOR Utilities Inc.
Location: Edmonton, Alberta
Sub Consultant: Thurber Engineering Ltd.
Contractor: Whitson Contracting



Tweddle Drainage Upgrades

Firm: **Stantec Consulting Ltd.**
Client: EPCOR Water Services Inc.
Location: Edmonton, Alberta
Contractors: M.A.P. Water and Sewer Services Ltd.; Kran Construction Ltd.;
Weinrich Contracting Ltd.; CKB Construction Ltd.



Community Outreach and In-House Initiatives



McElhanney Cares Alberta

Firm: **McElhanney Ltd.**
Client: McElhanney Ltd.
Location: Various Locations, Alberta



Transportation Infrastructure - Roads, Interchanges, Airports, Mass Transit



Development of a Novel Risk-based Highway Geotechnical Asset Management System

Firm: **Tetra Tech Canada Inc.**
Client: Transportation and Economic Corridors
Location: Edmonton, Alberta



Edmonton International Airport Cogeneration

Firm: **SMP Engineering**
Client: Edmonton International Airport
Location: Edmonton, Alberta
Sub Consultants: SMP Engineering; CIMA Canada Inc. (CIMA+)
Contractor: ATCO
Other Key Players: ICX; APEX Automation





Jasper Avenue New Vision

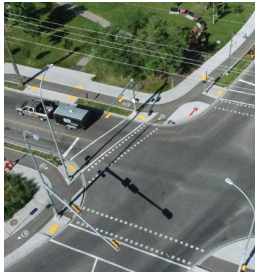
Firm: Joint: **DIALOG & AI-Terra Engineering Ltd.**

Client: City of Edmonton

Location: Edmonton, Alberta

Sub Consultants: AI-Terra Engineering Ltd.; DIALOG; EDA Planning + Urban Design; Thurber Engineering Ltd.; Twenty/20 Communications; The Archaeology Group; SMA Consulting Ltd.

Contractors: PCL Construction; Abalone; CKB Construction; Thompson Infrastructure; Seven M Construction; Black & McDonald; Lafarge; Vector Construction; Place-Crete Systems; Old World Paving Stones; Oliver James Site Furnishings; Can-Traffic Services; Kichton; Visco Demolition and Recycling



Montgomery Main Streets: Where a Street Becomes a Community

Firm: **Urban Systems Ltd.**

Client: City of Calgary

Location: Calgary, Alberta

Sub Consultants: RJC Engineers; Thurber Engineering Ltd.; ADP Engineering Ltd.; Russell PR Inc.

Contractor: ALSA Road Construction Ltd.

Other Key Player: City of Calgary



Spray Lakes Road Coal - Mine Void Risk Mitigation

Firm: **Klohn Crippen Berger Ltd.**

Client: Transportation and Economic Corridors

Location: Canmore, Alberta

Sub Consultants: Tetra Tech Canada Inc.; Challenger Geomatics; 3vGeomatics; ATS Traffic

Contractors: DCL Construction Services Ltd.; R.S. Foundation Systems Ltd.; Triton Environmental Consultants Ltd.



Transportation Infrastructure - Roads, Interchanges, Airports, Mass Transit Continued



Stoney Trail / 14 Street NW Interchange

Firm: **AECOM**
Client: City of Calgary / Transportation and Economic Corridors
Location: Calgary, Alberta
Sub Consultants: TDM Engineering Ltd.; Canadian Highways Institute Ltd.;
Russell Public Relations, Inc.
Contractors: AECOM Transportation West Ltd.; Flatiron Construction Corp.;
Other Key Player: ISL Engineering and Land Services Ltd.

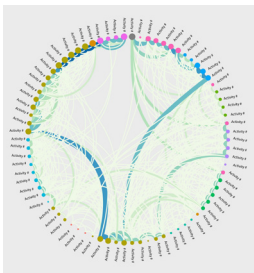


Terwillegar Drive, Whitemud Drive to Anthony Henday Drive - Concept Planning for Capacity and Operational Improvements

Firm: **AI-Terra Engineering Ltd.**
Client: City of Edmonton
Location: Edmonton, Alberta
Sub Consultants: ISL Engineering and Land Services Ltd.; Twenty/20 Communications;
Thurber Engineering Ltd.; SMA Consulting Ltd.; ACI Acoustical Consultants;
Spencer Environmental Management Services



Studies, Software and Special Services



ASAP: An Advanced Schedule Analysis Platform for Successful Project Management

Firm: **SMA Consulting Ltd.**
Client: SMA Consulting Ltd.
Location: Edmonton, Alberta
Other Key Players: City of Edmonton; Edmonton Catholic School Division





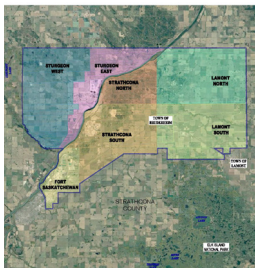
City-Wide Stormwater Mapping and Modelling

Firm: **Associated Engineering**
Client: City of Calgary
Location: Calgary, Alberta



Climate Change Adaptation Resilience Training Program

Firm: **Associated Engineering**
Client: Alberta Environment and Protected Areas
Location: Edmonton, Alberta



Designated Industrial Zone (DIZ) Pilot Project - Regional Water Systems Feasibility Study

Firm: **Stantec Consulting Ltd.**
Client: Alberta Environment & Parks
Location: Edmonton, Alberta

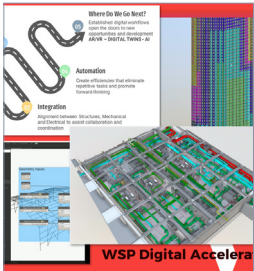


Studies, Software and Special Services Continued



Development of a Novel Risk-based Highway Geotechnical Asset Management System

Firm: **Tetra Tech Canada Inc.**
Client: Transportation and Economic Corridors
Location: Edmonton, Alberta



SME22 - WSP Digital Acceleration Initiative

Firm: **WSP**
Client: WSP Canada Inc.
Location: Edmonton, Alberta



Building Engineering - Commercial



General Block

Firm: **RJC Engineers**
Client: RNDSQR
Location: Calgary, Alberta
Sub Consultants: EMBE Consulting Engineers Inc.; E2K Engineering Ltd.
Contractor: Ironwood Building Corp.
Other Key Player: Formed Alliance Architecture Studio



Building Engineering - Commercial Continued



State-of-the-Art Shredder and Recycling Facility

Firm: **Arrow Engineering Inc.**
Client: General Recycling Industries Ltd.
Location: Edmonton, Alberta
Other Key Players: Glen Tichkowsky; Kevin Mattai



University District Block 23

Firm: **RJC Engineers**
Client: University of Calgary Properties Group
Location: Calgary, Alberta
Sub Consultants: Smith + Andersen; Designcore Engineering Ltd.; Civitas, Inc.
Contractor: Graham Management Services LP
Other Key Player: GGA - Architecture



Project Management



Terwillegar Drive Stage 2 Priority Ladder Process

Firm: **CIMA Canada Inc. (CIMA+)**
Client: City of Edmonton
Location: Edmonton, Alberta
Sub Consultant: Associated Engineering
Other Key Player: EHAN Engineering Ltd.



Project Management Continued



Tweddle Drainage Upgrades

Firm: **Stantec Consulting Ltd.**
Client: EPCOR Water Services Inc.
Location: Edmonton, Alberta
Contractors: M.A.P. Water and Sewer Services Ltd.; Kran Construction Ltd.;
Weinrich Contracting Ltd.; CKB Construction Ltd.

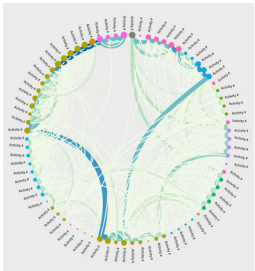


Westwood Garage Demolition

Firm: **Englobe Corp.**
Client: NAIT
Location: Edmonton, Alberta
Other Key Players: Byron Mazur; Philippe Gingras



Small Firm - Big Impact



ASAP: An Advanced Schedule Analysis Platform for Successful Project Management

Firm: **SMA Consulting Ltd.**
Client: SMA Consulting Ltd.
Location: Edmonton, Alberta
Other Key Players: City of Edmonton; Edmonton Catholic School Division



Small Firm - Big Impact Continued



Roxy Theatre Rebuild

Firm: **Arrow Engineering Inc.**
Client: The Theatre Network
Location: Edmonton, Alberta
Other Key Players: Glen Tichkowsky; Kevin Mattai; Scott Koehn



Terwillegar Drive, Whitemud Drive to Anthony Henday Drive - Concept Planning for Capacity and Operational Improvements

Firm: **AI-Terra Engineering Ltd.**
Client: City of Edmonton
Location: Edmonton, Alberta
Other Key Players: ISL Engineering and Land Services Ltd.; Twenty/20 Communications; Thurber Engineering Ltd.; SMA Consulting Ltd.; ACI Acoustical Consultants; Spencer Environmental Management Services



Community Development



Roxy Theatre Rebuild

Firm: **Arrow Engineering Inc.**
Client: The Theatre Network
Location: Edmonton, Alberta
Other Key Players: Glen Tichkowsky; Kevin Mattai; Scott Koehn





Drainage Solutions for Sunnyhill Lane Residents

Firm: **GHD Limited**
Client: City of Calgary
Location: Calgary, Alberta
Contractor: LBCO Contracting Ltd.



Edmonton International Airport Cogeneration

Firm: **SMP Engineering**
Client: Edmonton International Airport
Location: Edmonton, Alberta
Sub Consultants: SMP Engineering; CIMA Canada Inc. (CIMA+)
Contractor: ATCO
Other Key Players: ICX; APEX Automation



Grande Prairie Regional Hospital

Firm: **DIALOG**
Client: Alberta Health Services
Location: Grande Prairie, Alberta





High Prairie Campus Northern Lakes College Photovoltaic Project

Firm: **SMP Engineering**
Client: Northern Lakes College
Location: High Prairie, Alberta
Sub Consultants: SMP Engineering; Revolve Engineering; Chernenko Engineering; CIMA Canada Inc. (CIMA+)
Contractor: Cdn. Power Pac
Other Key Players: JRL Developments Inc.; thinkspace



Innovation Crossing

Firm: **RJC Engineers**
Client: Heritage Park Historical Village
Location: Calgary, Alberta
Sub Consultants: Remedy Engineering; SMP Engineering; Urban Systems Ltd.
Contractor: Akela Construction Ltd.
Other Key Player: Ace Architecture



Jasper Avenue New Vision

Firm: **Joint: DIALOG & Al-Terra Engineering Ltd.**
Client: City of Edmonton
Location: Edmonton, Alberta
Sub Consultants: Al-Terra Engineering Ltd.; DIALOG; EDA Planning + Urban Design; Thurber Engineering Ltd.; Twenty/20 Communications; The Archaeology Group; SMA Consulting Ltd.
Contractors: PCL Construction; Abalone; CKB Construction; Thompson Infrastructure; Seven M Construction; Black & McDonald; Lafarge; Vector Construction; Place-Crete Systems; Old World Paving Stones; Oliver James Site Furnishings; Can-Traffic Services; Kichton; Visco Demolition and Recycling





McKnight Boulevard Pedestrian Bridge Rehabilitation

Firm: **RJC Engineers**
Client: City of Calgary
Location: Calgary, Alberta
Sub Consultant: Urban Systems Ltd.
Contractor: Graham Management Services LP



Modern Integrated Waste Management Facility

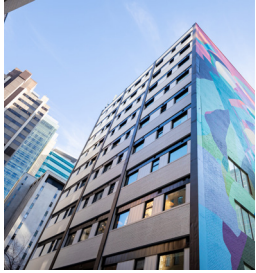
Firm: **Tetra Tech Canada Inc**
Client: City of Lethbridge
Location: Lethbridge County, Alberta
Sub Consultants: ReLumen Engineering Inc.; Kumlin Sullivan Architectural Studio Ltd.; Sunwise Engineering Ltd.; Feeg Engineering Ltd.; BCB Engineering Ltd.
Contractors: Whissel Contracting Ltd.; McNally Contractors (2011) Ltd.; GoldRidge Sand and Gravel; Secure Energy Services Inc.; Southwest Design & Construction Ltd.; Engineered Compost Systems; John Zink Hamworthy; DMT Mechanical Ltd.




Montgomery Main Streets: Where a Street Becomes a Community

Firm: **Urban Systems Ltd.**
Client: City of Calgary
Location: Calgary, Alberta
Sub Consultants: RJC Engineers; Thurber Engineering Ltd.; ADP Engineering Ltd.; Russell PR Inc.
Contractor: ALSA Road Construction Ltd.
Other Key Player: City of Calgary





Neoma (formerly known as Sierra Place)

Firm:	Entuitive Corporation	
Client:	HomeSpace Society	
Location:	Calgary, Alberta	
Sub Consultants:	M3 Development Management; GGA-Architecture; Reinbold Engineering Group; PCL Construction; Nemetz (S/A) & Associates Ltd.	
Other Key Player:	Inn From the Cold	




Students' Association of MacEwan University (SAMU) Building

Firm:	Stantec Consulting Ltd.	
Client:	MacEwan University	
Location:	Edmonton, Alberta	
Sub Consultants:	Arrow Engineering Inc.; RJC Engineers; DIALOG	
Contractor:	Graham Construction	
Other Key Player:	Stantec Architecture Ltd.	



TELUS World of Science Edmonton - Aurora Expansion

Firm:	DIALOG	
Client:	TELUS World of Science Edmonton	
Location:	Edmonton, Alberta	
Sub Consultant:	WSP	
Contractor:	Delnor Construction Ltd.	

Consulting Engineers of Alberta Acknowledges and Thanks the
Showcase Awards Gala Sponsors 2023

Supporting Sponsors



Contributing Sponsor



Consulting Engineers of Alberta Acknowledges and Thanks the
Showcase Awards Gala Sponsors 2023

Patron Sponsors



Master of Ceremonies



Ryan Jespersen

Ryan Jespersen hosts Real Talk, one of Canada's most-downloaded modern talk shows. He recently graced the cover of Edify Magazine as the "Prince of Podcasting". Ryan was named one of Alberta's 50 Most Influential People by Venture Magazine, and was on Avenue's inaugural list of Edmonton's Top 40 Under 40. You'll find him online at ryanjespersen.com, and on Twitter and Instagram @ryanjespersen.

Consulting Engineers of Alberta thanks the following
for their expertise in assisting in the success of the

2023 Showcase Awards Gala

ARTSMITH.ca



Jake's Framing



Consulting Engineers of Alberta would like to thank you
for joining them on this special evening!

- Please join us after the awards program to mix and mingle at the President's Party -
- Refreshments including coffee, tea, high-balls, beer, wine and liqueurs will be served -